

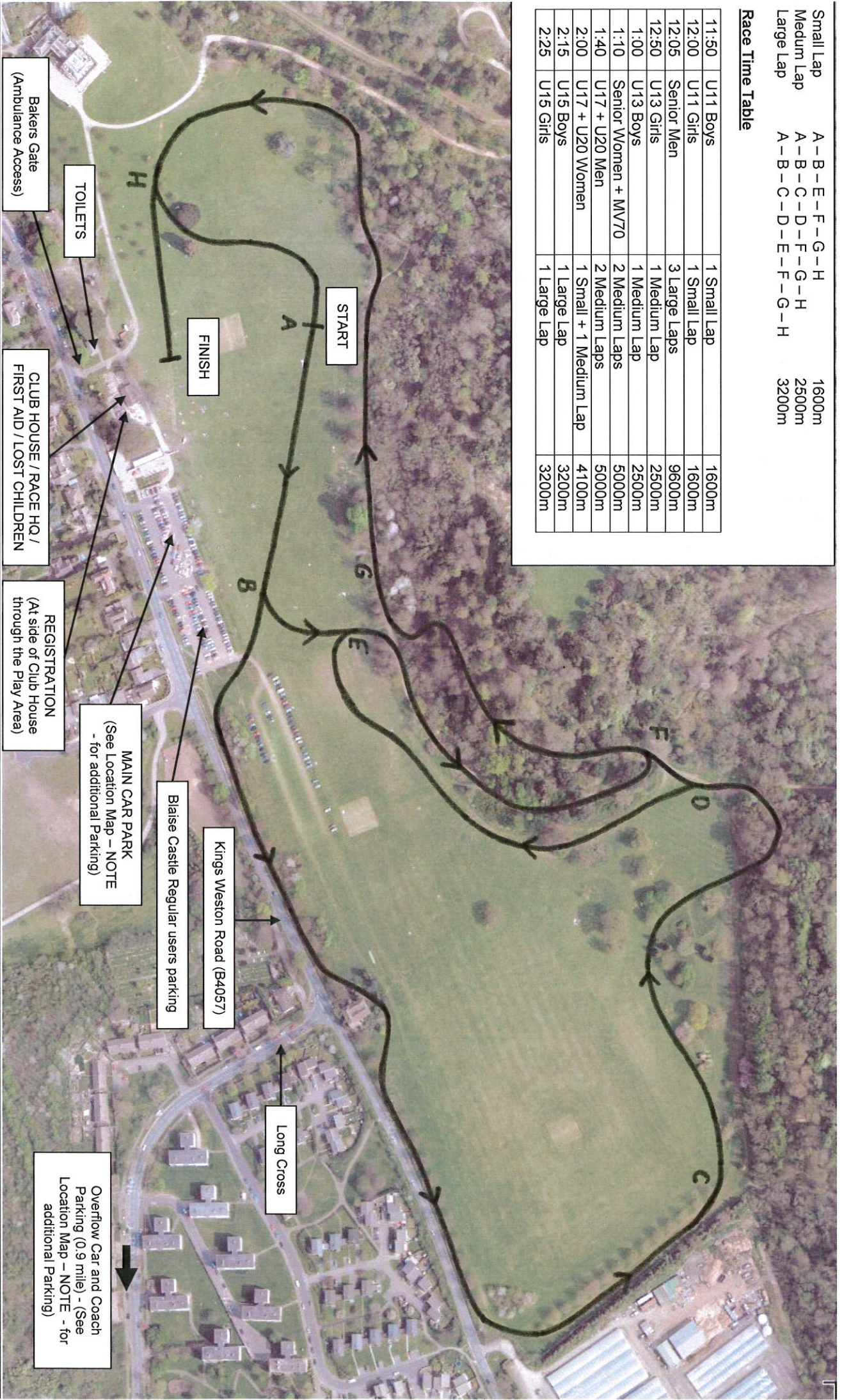
# GWENT CROSS COUNTRY LEAGUE – BLAISE CASTLE ESTATE, BRISTOL – Saturday 3 March 2012

## COURSE MAP

Small Lap	A-B-E-F-G-H	1600m
Medium Lap	A-B-C-D-F-G-H	2500m
Large Lap	A-B-C-D-E-F-G-H	3200m

### Race Time Table

11:50	U11 Boys	1 Small Lap	1600m
12:00	U11 Girls	1 Small Lap	1600m
12:05	Senior Men	3 Large Laps	9600m
12:50	U13 Girls	1 Medium Lap	2500m
1:00	U13 Boys	1 Medium Lap	2500m
1:10	Senior Women + MV70	2 Medium Laps	5000m
1:40	U17 + U20 Men	2 Medium Laps	5000m
2:00	U17 + U20 Women	1 Small + 1 Medium Lap	4100m
2:15	U15 Boys	1 Large Lap	3200m
2:25	U15 Girls	1 Large Lap	3200m



Bakers Gate  
(Ambulance Access)

TOILETS

FINISH

START

CLUB HOUSE / RACE HQ /  
FIRST AID / LOST CHILDREN

REGISTRATION  
(At side of Club House  
through the Play Area)

MAIN CAR PARK  
(See Location Map - NOTE  
- for additional Parking)

Blaise Castle Regular users parking

Kings Weston Road (B4057)

Long Cross

Overflow Car and Coach  
Parking (0.9 mile) - (See  
Location Map - NOTE - for  
additional Parking)